



**UNITED NATIONS**  
Barbados & the Eastern Caribbean

• Anguilla • Antigua and Barbuda • British Virgin Islands •  
Commonwealth of Dominica • Grenada •  
Montserrat • Saint Lucia • Saint Kitts and Nevis •  
Saint Vincent and the Grenadines • OECS

# St. Vincent & the Grenadines: La Soufrière Volcano

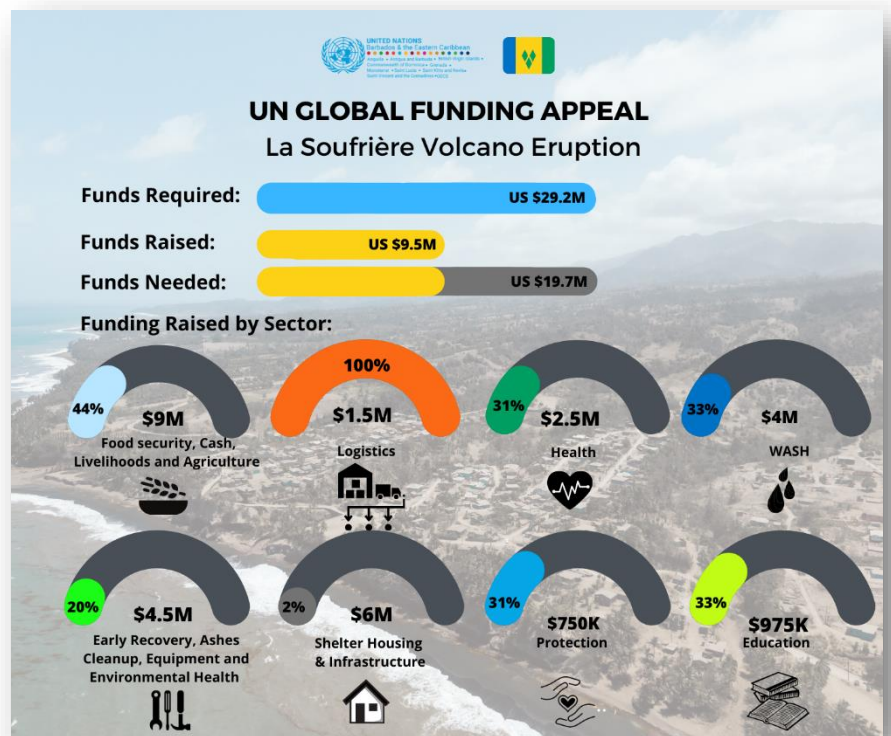
## Monthly Report No. 01

As of 18 June 2021

This monthly report is produced by the United Nations Sub-Regional Team (UNST) for Barbados and the Eastern Caribbean in collaboration with humanitarian partners. It is issued by the Office of the Resident Coordinator with the support of the United Nations Office for the Coordination of Humanitarian Affairs (OCHA).

### HIGHLIGHTS

- Approximately **USD 9.5 million** (32 percent) has been raised under the **USD 29.2 million** UN Global Funding Appeal launched on 20 April to support Saint Vincent and the Grenadines. This total includes funds repurposed and mobilized by UN agencies, as well as pipeline funding.
- The Caribbean Partners Development Group (CDPG), co-chaired by CDEMA and the Resident Coordinator's Office (RCO) of Barbados and the Eastern Caribbean, convened a meeting on 10 June 2021 to update partners on the progress of the response related to the explosive eruption of the La Soufriere Volcano in Saint Vincent and the Grenadines.
- The Volcano remains in a state of unrest, and as indicated by UWI Seismic Research Centre, residents from the **RED** and **ORANGE** zones have to live and adapt to a new and changing environment.
- Approximately **51** public shelters are occupied, and there are an estimated **2,131** evacuees.



### Donors



## SITUATION OVERVIEW

The Volcano remains at an ORANGE alert. The number of persons in shelters continues to fluctuate as people leave to clean their homes and return. UNICEF has provided footage of families making the journey home since the evacuation and can be viewed [here](#). The UWI Seismic Research Centre says seismic activity at La Soufrière Volcano in St Vincent remains low since the tremor associated with the explosion and ash venting on 22 April. However, persistent steaming is observable from the observatory once the cloud cover is high enough and thermal anomalies continue to be detected by the NASA FIRMS alert system. These have been persistent since the 22 April explosion. Chateaubelair, Fitz- Hughes communities, and all communities in the Red Volcano Hazard zone remain restricted.



Lahars (mudflows) pose a dangerous threat to the Volcano's river valleys, including Wallibou and Rabacca. Lahars can potentially cause damage to property and severe injury to persons in their path. Mudflows observed were composed of boulders up to 5m (15 feet) in diameter.

Teams of health personnel visit the shelters daily to administer COVID-19 vaccinations and tests and carry out syndromic surveillance (Coughs, Fevers, and Diarrhoea); none of these three symptoms were reported.<sup>1</sup>



*Ash Clean up in Georgetown (Red Zone)*  
Photo Credit: WFP

<sup>1</sup> PAHO Situation Report #29 La Soufrière Volcano St Vincent and the Grenadines 14 June 2021

## GENERAL COORDINATION

On 10 June, international and regional donors convened to discuss the UN Global Funding Appeal for Saint Vincent and the Grenadines. Prime Minister Dr. Ralph Gonsalves, the UN Resident Coordinator for Barbados and the Eastern Caribbean, thanked international development partners for their support and provided an update on the UN Funding Appeal, including remaining funding needs as the country moves towards the recovery phase of the emergency. From the Government of Saint Vincent and the Grenadines, Deputy Prime Minister Montgomery Daniel and the Hon. Camillo Gonsalves, Minister of Finance, Economic Planning, and Information Technology, were also in attendance.



The main areas with the most significant funding needs identified in the UN presentation were: Shelter, Housing and Infrastructure; Early Recovery, Ashes Clean-up, Equipment, and Environmental Health; Protection, and Health.

Some of the donors and partners who participated included CDEMA, Canada, the UK Foreign, Commonwealth & Development Office (FCDO), the World Bank, the European Union Delegation, United States Agency for International Development, the Caribbean Development Bank, European Investment Bank, Embassy of Cuba, Embassy of Colombia, Embassy of Japan, Embassy of Venezuela, Embassy of Chile, Embassy of Belgium, Embassy of the Republic of China, Embassy of Ghana and the Embassy of Korea,

As part of the donor roundtable discussions, the achievements made by the UN and partners were reviewed, and funding needs by sectors were discussed. Further information on funding gaps by sector can be found [here](#).

## UN HUMANITARIAN AND RECOVERY RESPONSE

### Early Recovery

#### Needs:

- Initial detailed sectoral assessment of the impact.
- Cleaning and clearing of ash and debris.

#### Response:

- United Nations Development Programme (UNDP) continues discussions with the Government of Saint Vincent to complete a Post Disaster Needs Assessment (PDNA).
- Over 70 persons have been employed as part of the northeast work team tied to the ash removal programme on the island. The teams have already cleaned the compounds (external) of nine schools, including drains, footpaths, and open areas, with the work now moving to the interior of these buildings. Approximately 12,000 cubic yards of ash have been cleared to date.
- An additional 50 persons have been employed on the northeast, clearing 400 cubic yards of ash from the Spring Village Primary, Troumaca Primary and Secondary, Rose Hall Primary, and the Rose Bank Primary Schools.



#### Gaps & Constraints:

- Gap on information related to damages articulating needs.

### Education

#### Needs:

- Teaching-learning support for the preparation of exams.
- Support preparation of exams for the displaced children and children whose schools are being used as shelters.



**Response:**

- A total of 300 (149 male and 151 female) students are still in the shelters and provided with online teaching-learning support. Of these students, 176 are from the Primary section, and the remaining 124 are enrolled in the Secondary classes.
- In the learning hubs established in collaboration with MoE and UNICEF, 3,300 students continue to prepare for grade 6 and grade 9 examinations.
- Certificates of Participation, first aid supplies, and knapsacks for disaster items are being distributed to the students who participated in the Continuity of Learning informal programme in Shelters (Basic Survival Skills Club - Grade 7-9 Band). Some of the club activities delivered were:
  - a. How to pack a disaster bag?
  - b. How to survive a flood, hurricane, earthquake, etc.?
  - c. Cooking outdoors
  - d. Knot tying
  - e. Emergency Radio Communication
  - f. Build a First aid kit
  - g. Experimenting with Ash
  - h. Building and launching a CO<sub>2</sub> Rocket
  - i. Identifying local springs and sterilising the water
- Preparation for Recovery of Learning programme for Grade 1 - Grade 11 students 2021 - 2023 is underway, which entails:
  - a. Consulting with stakeholders - principal, teachers, parents, Division of Teacher Education (DTE),
  - b. Designing the programme.
  - c. Preparation of diagnostic assessment in reading and math

**Gaps & Constraints:**

- Assessment for school cleanup in the Red zone yet to be undertaken and plans to be finalised for timely safe re-opening of schools in September before the new academic year.

## Food Security, Cash, Livelihoods, and Agriculture

**Needs:**

- Loss of assets and livelihoods (crops, livestock, and fisheries).
- Insufficient food supplies in shelters to address needs for an extended period.
- Ongoing adverse socio-economic impacts of the COVID-19 pandemic compounding the situation.

**Response:**

- The World Food Programme (WFP), in partnership with the Ministry of National Mobilisation, Social Development, Family, Gender Affairs, Persons with Disabilities and Youth (MoNM), is implementing the Soufriere Relief Grant to assist vulnerable households affected by the volcanic eruption. The programme provides cash transfers to evacuees staying in private homes, public shelters, displaced health workers, and other vulnerable populations.
- As of 16 June, payments totaling USD 557,000 have been sent to 2,274 households registered under the programme, reaching 13,455 individuals. Beneficiaries collect their payments through money transfer agents located across the island with payment notifications and codes sent out to beneficiaries via SMS.
- WFP plans to provide payments to an additional 1,200 households in June, mainly targeting individuals staying in public shelters and those who recently left.
- WFP has completed the verification and assessment exercise of all evacuees in private homes. The exercise, implemented in collaboration with MoNM, verified data on more than 4,000 households, including information on household composition and vulnerabilities.
- WFP is supporting the Ministry of Education on public shelter exit surveys using a digital data collection form and will assess those exiting for inclusion in the Soufriere Relief Grant.
- WFP continues to support the Evacuees Data Working Group on digitalisation, analysis, and data visualisation.
- The Food and Agriculture Organization (FAO) is working with the Ministry of Agriculture and other partners to develop a roadmap for recovery and rehabilitation and a longer-term plan for building back better.
- FAO is assisting (via inputs support) on the establishment and health management of the temporary centers where animals are currently located (government assets).

- FAO is also continuing to conduct complementary geospatial analysis to help design recovery and rehabilitation activities in suitable areas within the Orange and Red zones to help resume agriculture activities. It is also assisting with the digitalization and analysis of farm-level crop damage and loss data.

#### Gaps & Constraints:

- Financial resources for cash transfers and food distributions.
- Gaps in additional information on damage and recovery needs.
- Capacity constraints in the public service.



## Health

#### Needs:

- Improve Health Information Services with respect to Supply Chain Management.
- Support HEOC and coordination of health support.
- Support Surveillance data collection.
- Access to SRH services by adolescents, given the restrictive legal framework, is a challenge.
- Further needs will be identified once the rapid SRH assessment of shelters is completed.

#### Response:

- Pan American Health Organisation (PAHO) organized a series of capacity-building webinars to provide Mental Health and Psychosocial Support (MPHSS) to frontline workers.
- PAHO and UNICEF support the communication plan implemented by MoH to decrease vaccine hesitancy.
- PAHO supplied furniture and several appliances to facilitated the use of the Annex to the H-EOC. PAHO will also use this facility for the temporary storage of its donations.
- PAHO is working with the World Food Program (WFP) to facilitate the distribution of cash assistance vouchers to approximately 180 displaced health care workers and their families.
- PAHO facilitated the delivery of 21,600 COVID-19 vaccines from COVAX on 25 May 2021. In addition, the PAHO/UNICEF social media campaign on COVID-19 vaccines started last week.
- PAHO will donate additional PPE's and N95 masks as requested by the Ministry of Health. A shipment of 10,000 gowns and 7,228 respirator masks (non-medical) arrived from Panama on 31 May 2021. The respirator masks are essential for use during cleaning operations. An Additional shipment of 8,000 N95 masks from Barbados is expected to arrive in SVG on 11 June 2021.
- The United Nations Population Fund (UNFPA) is providing technical support to the Family Planning/Maternal health coordinator of the Ministry of Health to identify and address sexual and reproductive health needs.
- In collaboration with the OECS Commission, UNFPA has also conducted a four-day training with national stakeholders (Health, Gender, NEMO, CSOs) in Saint Vincent and the Grenadines to address sexual and reproductive health needs in emergencies. Representatives from OECS Commission and CDEMA are also in training.
- International Organization Migration (IOM) is supporting with providing accommodation for displaced health care workers and assistance in MHPSS.
- UNICEF supports MOH in sending messages about breastfeeding and nutrition to pregnant and lactating mothers who the Volcano displaced. To date, 37,435 persons have been reached with lifesaving messages and information about access to services, including 4,700 persons in shelters.

#### Gaps & Constraints:

- Heightened risk of COVID-19 transmissions.

## Logistics

### Needs:

- Coordination of supply and distribution of relief items.
- Additional storage capacity for incoming relief.

### Response:

- WFP, in support of the government-led response, is using its logistics capacity and expertise to strengthen the existing relief management systems. WFP's technical assistance and mobilisation of assets and equipment complement its direct assistance to affected populations through cash transfers.
- The CDEMA Logistics System (CLS), an online system developed by WFP in cooperation with CDEMA, has been launched in Saint Vincent and the Grenadines to register, track and give visibility to available assets and relief items delivered to populations affected by the eruption. WFP has provided training to relevant stakeholders on the use of the CLS, and there are currently 73 registered CLS users.
- WFP continues supporting the receipt and dispatch of relief goods to and from the Arnos Vale Logistics Hub and NEMO's Campden Park 2 and Ottley Hall warehouses, which are being facilitated and tracked in the CLS. As of 16 June, 217,135 kg in relief cargo have been received and recorded in the CLS, and 105,097 kilograms have been dispatched through the CLS to 69 dispatch locations to assist evacuees in shelters and private homes.
- These numbers do not include water stored at Ottley Hall (327,563 kg), representing more than 50% of the total relief cargo recorded in CLS. In total, 232 service request forms have been approved through the CLS to dispatch requested assets to requesting partners.

# 217,135 kg



Relief cargo has been received and recorded in the CLS.

### Constraints:

- Availability of maritime assets.

## Protection

### Needs:

- Safe spaces/centres for children, women, and vulnerable people.
- Child protection and violence prevention and response services.
- Active engagement and capacity building of shelter managers to mitigate Gender-Based Violence (GBV) risks.
- Specialised Mental Health and Psychosocial Support (MHPSS) emergency services for evacuees in shelters, private homes, and response workers.
- Ensure law enforcement personnel in shelters are also female and that all of them are trained on PSEA and sign a Code of Conduct.
- Targeted distributions for women and girls, including Dignity Kits.
- Ensure women and girls are included in decision-making around the shelters, encouraging women-led support groups.

# 15



Unaccompanied and separated children reunited with family-based care or a suitable alternative.

### Response:

- The United Nations Entity for Gender Equality and the Empowerment of Women (UN Women) has collaborated with PAHO and is engaging an MPHSS Consultant to provide clinical support to impacted persons.
- UNFPA continues to remotely provide regular GBViE technical assistance support to the Gender Affairs Division and has submitted an updated version of the GBV Referral Pathways for revision and launched.
- UNFPA submitted the GBV Safety Audit report to the Gender Affairs Division for endorsement by the National Cabinet on 6 May. Approval was communicated to UNFPA on 21 May for the public release of the document.
- UNICEF Goodness Tours has completed its first mural in Georgetown. The approach engages community members to be a part of art therapy-based sessions which are then translated to a mural depicting the thoughts and ideas from community members, including children. Children and community members are then invited to paint some parts of the mural. Several other art sessions continue to be held with children and community members across the island.
- UNICEF has supported the reunification of 15 unaccompanied and separated children (USAC) in either family-based care or a suitable alternative.
- The Child Protection Referral Pathway was approved and is currently being disseminated to key stakeholders.
- To date, 943 children and caregivers have accessed mental health and psychosocial support delivered by UNICEF in collaboration with national partners.

- UNICEF has supported joint training sessions for facilitators of child-friendly spaces to be rolled out in communities and shelters. This initiative is led under the Child Protection and Wellbeing Coordination Team comprising of the MoNM, MoE, MoH, UNICEF, IFRC, Red Cross, and IsraAID.
- IsraAID has trained over 25 community leaders for child-friendly spaces.

## Shelter, Housing, and Infrastructure

### Needs:

- The Government is consolidating the number of emergency shelters in preparation for the final exams and the new school year in September. Currently, over 34 shelters have been closed, and those need deep sanitation and repairs.
- In the 51 emergency shelters that remain open, tensions are building up. The crowded environment increases the threats of the spread of the COVID-19 virus, mental health issues, and general safety and protection in general. As a result, there is a need to support shelter management, while many teachers go back to their regular job.
- With the Volcano Alert Level change to Orange, families from the Orange zone are returning home. Monitoring of this flow is required to determine the location of the needs. Additionally, vulnerable families in the Orange zone need support with restoring and cleaning their homes and potential transportation.

### Response:

- International Organisation for Migration (IOM) has offered support to NEMO to develop a recovery strategy - roadmap (how to get people back home/leave the shelters). Additionally, activities related to hurricane season preparedness are being considered.

### Gaps & Constraints:

- Additional funding needs to be secured to repair and prepare the emergency shelters and houses in SVG for the hurricane season.

## Water, Sanitation, and Hygiene

### Needs:

- Emergency water trucking in 15 public shelters in case of water disruption.
- Increased water storage capacity in 15 public shelters for emergency preparedness.
- Rehabilitation and maintenance in sanitation facilities in public shelters.
- Promote hygiene awareness and messaging in public and private shelters.
- WASH needs in private shelters are still to be identified through partner assessments.
- Preparedness plan for Hurricane season and low COVID-19 testing and vaccine uptake.
- Family hygiene kits (including menstrual hygiene, nappies, masks, etc.)
- Cleaning kits for environmental health at the shelter and household levels.
- Essential lifesaving and risk-associated COVID-19 and hygiene awareness campaigns and messages, including menstrual hygiene management.
- Hygiene promotion and behavior change material for shelters.
- Drainage around WASH facilities in view of rains and storms that have begun.

### Response:

- UNICEF is working with the Ministry of Public Utilities to support their WASH initiatives (the team will be in Saint Vincent and the Grenadines). The team has facilitated the transition to national leadership and successfully handover some responsibilities to the MPU, which now has a seat in the EOC (NEMO) on WASH). A representative of the Ministry of National Mobilization has already joined the WASH group.
- Approximately 430 evacuees and returnees have been reached with hygiene supplies and services through UNICEF support.
- PAHO supported health care facility visits and WASH assessments (PAHO and SEHO) from 25 April -7 May 2021. Thirty (30) facilities were visited, 26 of which were assessed, including four (4) in the Yellow zone and 22 in the Green zone. The results showed that recommended residual chlorine levels were not met in six facilities and 18 facilities have water storage deficits. In addition, greywater drainage was found inadequate in two facilities, and five required additional tools for proper waste segregation and management. Recommendations based on the assessment included the installation of hand hygiene/hand sanitisation stations at the entrances of all health facilities; additional storage tanks at the 18 health facilities; installation of soak away fields at 10 facilities; and drain trenches in two (2)

facilities to improve greywater drainage; and the procurement of wheeled 50-70 gallon bins at five facilities. Additional facilities will be assessed as geographical locations are deemed safe, and residents and businesses can return to those areas.

**Gaps & Constraints:**

- The physical ability of returnees to clean the shelters.
- COVID-19 and hygiene promotion and awareness-raising for infection prevention and control and healthy behavior practice.
- Concerns are raised from the mobilisation department regarding 200 displaced health workers from the Red zone.
- Concerns are raised from the public health department for the conditions and protocols of supplies storage (such as bottled water).

## FUNDING APPEAL

---

For more information on contribution to the UN Funding Appeal, please visit UN Barbados and the Eastern Caribbean website [here](#) or contact Tia Browne, Development Coordination Officer, Partnerships and Development Finance, with the Resident Coordinator Office via email: [tia.browne@un.org](mailto:tia.browne@un.org) or mobile +1 (246) 832-6107.

For further information, please contact:

**Carol Sanchez**, Humanitarian Affairs Officer, [sanchez21@un.org](mailto:sanchez21@un.org), Tel: +1 (246) 467-6111, Cell +1 (246) 832-6111

**Randy Warner**, Information Management Assistant, [randy.warner@un.org](mailto:randy.warner@un.org), Tel: +1 (246) 467-6113, Cell +1 (246) 836-6113

For more information, please visit [Caribbean Disaster Emergency Management Agency - CDEMA National Emergency Management Organization - The University of the West Indies Seismic Research Centre \(uwiseismic.com\)](#) PAHO Situation Reports WASH LAC